

# Galah

By Tristan



©MakeWayForTech

## INTRODUCTION

The galah is an Australian parrot. They are found in most of the country.



### Did You Know?

Galahs can breed with other members of the cockatoo family, including the Sulphur-crested Cockatoo.

# DESCRIPTION

It is pink and white.



## Useful Facts

Average length:

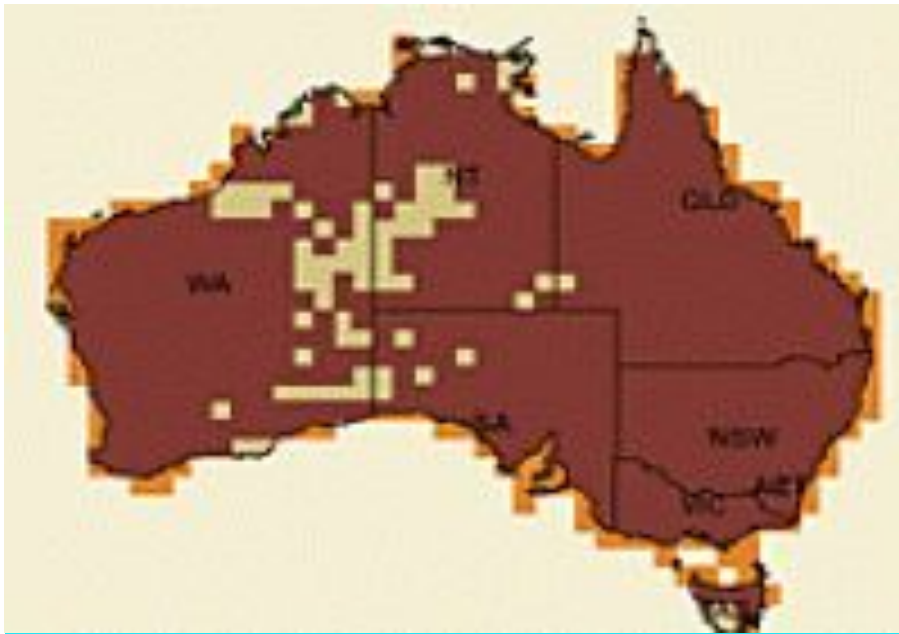
36cm

Average weight:

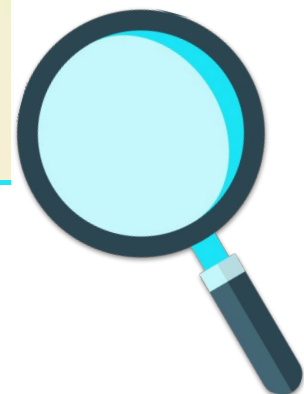
337g

©MakeWayForTech

# DISTRIBUTION



The brown is where they live.



©MakeWayForTech

# FACTS



## Diet

Galaha feed on seeds, mostly from the ground.

## Habitat

The Galah is found in large flocks in timbered habitats, usually near water.

## Breeding

Galaha form permanent pairs, but a bird will take a new partner if the other one dies.

©MakeWayForTech

## 3 REASONS TO PROTECT THEM...



They help plants grow.



We need to protect them as they are iconic.



They eat and control insects.

©MakeWayForTech

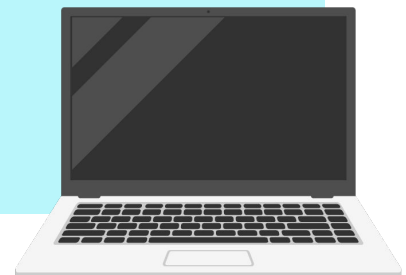
# HEADING



© MakeWayForTech

## SOURCES I USED

- ▶ <https://www.birdsinbackyards.net/finder/all-species>
- ▶ <https://www.environment.nsw.gov.au/get-involved/sydney-nature/wildlife/birds-in-sydney>
- ▶ <https://australian.museum/learn/animals/birds/birds-in-backyards-top-30-urban-birds/>



© MakeWayForTech