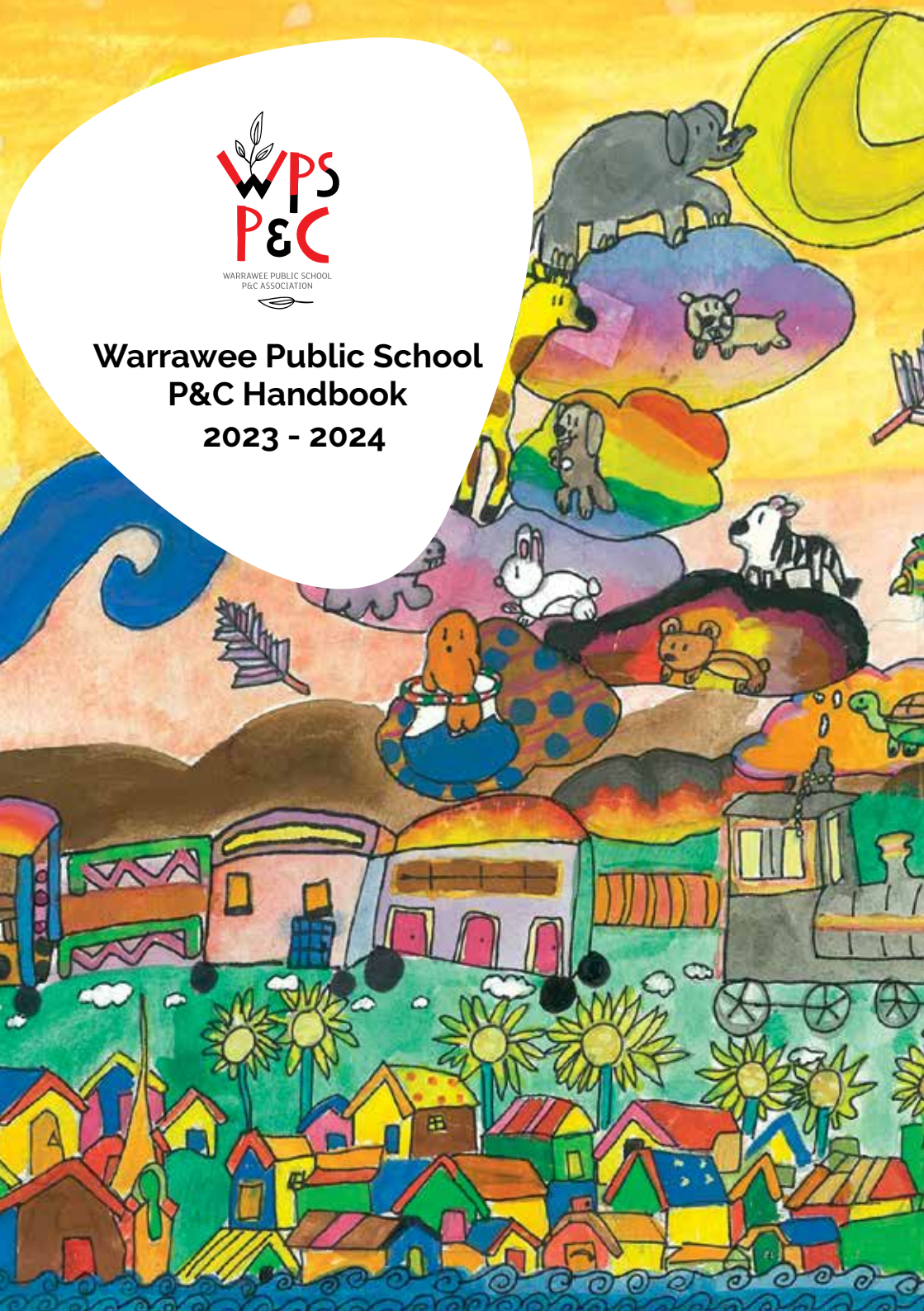




Warrawee Public School P&C Handbook 2023 - 2024



Contents

Uniform & Canteen

- 8** Flexichools account setup and ordering process
- 10** Uniform shop operations
- 12** Summer uniform starter packs
- 14** Winter uniform
- 16** Canteen

Communication - stay up to date

- 20** Warraweekly
- 21** School website
- 22** Warrawee App. alerts and notifications
- 23** P&C membership & meetings
- 23** P&C grant funds
- 25** Student details form and Class Parents

Events & Community

- 26** Fundraising
- 27** School community initiatives
- 27** Community grants
- 27** Parent business directory
- 27** Community partners

Band program

- 28** Band program

Traffic and safety

- 30** Parking, safety and traffic management

Grounds force

- 35** Grounds force

Quick Reference Guide

- 36** School & P&C contact details

On the cover: Operation Art



Whimsy
Claire H – Year 4



Welcome

The Warrawee Public School P&C warmly welcome you to our school! Our P&C Association is made up of caring parents and citizens just like you. The P&C promotes the interests of the parent body and the school by having parents, carers, citizens, pupils and school staff work in close co-operation.

All are welcome to join the P&C. You don't have to hold an official position, you can just join and come along to the meetings to hear about and contribute to what is happening at our school.

The P&C is responsible for the majority of fundraising for the school. This helps with additional needs of the teachers, parents and students to which Government funding does not extend. This may include extra teaching resources, additions and improvements to school facilities, community events, school sport or extra curricular activities.

But aside from this, the P&C is also responsible for managing our:

- Uniform Shop
- Canteen and
- Band program

These services are not for profit and all funds go back into making our services and the school a wonderful place for our children.

We work to bring the community closer together - staff, students, parents, carers and the broader community in which we live.

We organise social events, working bees and discuss issues such as traffic concerns and children's and parents' health and safety.

We have a Community Partnership Program to help support our fundraising and social events. We also support charities and offer seminars to the school community on a range of valuable topics.

P&C meetings are generally held on Tuesday evenings at the school or via Zoom in week 3 of each term at 7.30pm.

We encourage everyone to become a member of the P&C. You can join easily by filling in the form in Flexischools.

For more information about the P&C, please contact our President James Deane at president@wpspandc.org



James Deane
President

president@wpspandc.org

James Deane
President

WE WELCOME
TO THE TEAM
OUR NEW SECRETARY,
JUSTIN SMITH



Lucas Taylor
Vice President

Ben Halkon
Treasurer

There are 13
dedicated parents all
in all, who form the
P&C Executive





Working Bee

We've had 3 working bees this year. Thank you so much to those that help out. We filled 6 skips with debris, breathed some life back into the kitchen garden, and did some planting.



Mother's Day Stall

Beautiful gifts for the students to purchase for Mother's Day. It is a highlight of the year to watch the children excitedly choose that special present from our Mother's day stall to take home.



Father's Day Breakfast

A lovely busy and fun morning with over 400 breakfasts served and enjoyed by the children and their dads.

Uniform Shop, Canteen and Flexischools Ordering System

The following pages contain information on the Uniform Shop and Canteen, including information on how to order your initial School Uniform via Flexischools.

Steps you need to take are as follows:

- 1 Set up your Flexischools Account - please complete this step now.**
When adding a student to your account, please ensure you select Year Level "New Student" and Class "2024 New Student"
- 2** Please review the information on uniform options available and pricing prior to attending your first Orientation Day on **Tuesday, 14th November**.
- 3** As part of your first Orientation Day on **Tuesday 14th November**, the school will have existing students wearing and demonstrating the school uniform.
- 4** At the conclusion of the Orientation day on **14th November**, we will have size samples available in all garments for you to view. While we do not have change room facilities to allow your child to try the garments on, you will have the opportunity to hold all garments up to your child to help determine their size.
- 5** You must place your uniform order via Flexischools by the end of the following day - i.e. by **5pm on Wednesday 15th November**.
- 6** When placing your order, you may select any delivery date - regardless of which date you select, all orders placed by **5pm on Wednesday 15th November** will be ready for pickup at your second Orientation Day on **Tuesday, 28th November**.
- 7** All orders will be distributed at the end of your second Orientation Day on **Tuesday 28th November**.
- 8** If you miss the order cut off on 15th November and your order is not ready for pickup on Tuesday 28th November you will need to come to the Uniform Shop between 8.30am and 9.15am any Wednesday during school term to pick up your order.
- 9** If after receiving your order on 28th November you find you need to change any of the sizes, you will need to come to the Uniform Shop between 8.30am and 9.15am any Wednesday during school term. Please note: Next year once your child has started school, you will also have the option to drop the garments with an exchange form to the school office, and have the replacement garments delivered to your child in class. This option is not available to you now as your child has not yet started at the school.

Flexischools Account Setup

Your Flexischools account allows you to place orders with both the Canteen and Uniform Shop, and is how you will place your initial uniform order.

Register

- 1 Go to flexischools.com.au, select the Sign in button in the top right corner, then select the Register button and enter your email address.
- 2 You will be sent a registration email with a link to the registration page.
- 3 Follow the instructions on the registration page to set up your account. On page 2 of the registration form, your school settings are:
 - a) School Name: Warrawee Public School
 - b) Year Level: New Student
 - c) Class: 2024 New Student

Placing an order, including your initial uniform order after attending orientation on 14th November 2023

- 1 Go to flexischools.com.au and select the Sign in button in the top right corner
- 2 Log in using your newly created account details.
- 3 Select "Shop" for Uniform Shop orders, or "Food" for Canteen orders
- 4 Remember, when placing your initial uniform order, it does not matter what delivery date you select, all orders placed by 5pm on Wednesday 15th November will be ready for pickup at your second orientation day on Tuesday 28th November.



☎ 1300 361 769

➡ flexischools.com.au



10 years supporting
the school community



Committed to
healthy eating



Over 1,200
happy schools

The Flexischools service is provided by InLoop Pty Ltd (ABN 27 114 508 771) (trading as FlexiSchools) which holds Australian Financial Services Number 471558. Any information provided is general only and does not take into account your objectives, financial situation or needs. Please read and consider the Combined Financial Services Guide and Product Disclosure Statement at www.flexischools.com.au before acquiring or using the service. For more information please visit www.flexischools.com.au

Uniform Shop

The Uniform Shop is located on the Infants' (K-2) side of the school, opposite the Infants' School Office, and is open from 8.30am to 9.15am every Wednesday during school term.

This page and the following pages contain plenty of useful information on the Warrawee Public School Uniform, along with details of how to purchase new or second hand uniforms. Please send me an email if you have any further questions, or simply drop in and see me on a Wednesday morning.

Purchasing new garments

Online ordering via your Flexischools account is recommended. Simply select the "Uniforms" tile from your Flexischools account home page, select a delivery date, and order the garments required. All online orders are delivered to your child in class on the selected delivery date.

For any last minute or urgent purchases, you can buy over the counter at the Uniform Shop on a Wednesday morning. Please note we do not accept cash, payment can be made via EFTPOS, Mastercard and Visa.

Second hand uniforms

A selection of good quality second hand uniforms are available for purchase 8.30am to 9.15am on Wednesday mornings. Second hand summer and winter tunics are priced at \$8, all other second hand garments are \$4 each. Please drop in and have a look, and pick up some great value bargains!

Donations of second hand uniforms are warmly welcomed. Donations can either be dropped off to the Uniform Shop on a Wednesday morning, or if that time is not convenient, they can be taken to the school office at any time.

Exchanges for a different size

If you find that you have purchased the incorrect size, you may return it and exchange for a different size. Please note that we can only accept returns for garments that are unworn, with labels still attached, and in original packaging. Exchanges must be returned within one month of purchase.

There are two options for exchange. Option one is simply drop in to the Uniform Shop on a Wednesday morning with the garment(s) you are exchanging, and we can swap it over on the spot – no paperwork required.

If Wednesday morning is not convenient for you, you can drop off the garments to the school office at any time, with a completed exchange form. You should have received a printed copy of the exchange form with your order, if you no longer have this, you can download a copy of the form from the Uniform Shop page on the school website. All exchanges dropped off to the school office will be processed and delivered to your child in class on Tuesdays.



Oksun Seo
Uniform Shop Manager
uniformshop@wpspandc.org

Price list

Uniform Item Price

Girls uniform

Girls summer tunic	\$59.00
Girls grey shorts	\$25.00
Girls white shirt w/logo – short sleeve	\$24.00
Girls plain white shirt (long sleeve)	\$26.00
Girls winter tunic	\$72.00
Girls grey trousers	\$30.00
Girls white shirt w/logo – long sleeve	\$26.00
Girls black sport skirt w/red piping & logo	\$35.00
Girls red ankle socks	\$5.00
Girls red long socks	\$9.00
Girls red cotton/lycra tights	\$12.00

Boys uniform

Boys grey shorts	\$25.00
Boys white shirt w/logo – short sleeve	\$24.00
Boys grey trousers	\$30.00
Boys white shirt w/logo – long sleeve	\$26.00
Boys short grey socks/red and black stripes	\$9.00
Boys long grey socks/red and black stripes	\$12.00

Sports / unisex

Black unisex shorts w/red piping & logo	\$28.00
Black track pants w/red piping & logo	\$38.00
White sports ankle socks	\$6.50
Red polo shirt with logo - short sleeve	\$24.00
Red polo shirt with logo - long sleeve	\$29.00
Red bomber zip jacket	\$39.00
Red polar fleece zip jacket	\$39.00

Hat

Microfibre	\$18.00
------------------	---------

Backpacks & bags

School backpack with logo	\$49.00
Chair bag	\$15.00
Library bag	\$15.00
Excursion bag	\$15.00

Prices and uniform description current as at October 2023 and subject to change without notice. Refunds or exchanges of new items will be permitted if the item/s are returned within four weeks of original purchase, unworn, in original packaging with all tags attached and accompanied by Exchange form. The Uniform Manager will have the absolute decision of whether an item is in a fit condition for return.



Warrawee uniform

Girls Starter Pack

This list contains everything you will require to get started at Warrawee, including summer uniform, summer sports uniform and items you will use all year round such as bags and hats. All these items can be found in your Flexischools account – simply click on the "Shop" button on the home page once you have logged in, and select any date for your order – regardless of what day you select, all new student orders will be available for pickup on your second Kindy Orientation Day, Tuesday 28th November 2023.

Please note some items are not supplied by the uniform shop and you will need to supply your own (for example school shoes), and some items are listed twice (such as a polar fleece which is part of main uniform as well as sports uniform). In both these cases, this is clearly indicated in the list below.



Girls uniform – summer

- 2 x Girls summer tunic
- 3 x Girls red ankle socks
- 1 Red bomber zip jacket with logo AND/OR 1 Red polar fleece zip jacket with logo
- Black school shoes (not joggers) – NOT SUPPLIED BY UNIFORM SHOP

NOTE: If your child would prefer to wear shorts and shirt instead of a tunic, please replace the 2 summer tunics with:

- 2 x Girls grey shorts
- 3 x White shirt with logo – short sleeve



Sports uniform – summer

- 1 x Red polo shirt with logo – short sleeve
- 1 x Black unisex shorts with red piping and logo AND/OR 1 x Black Sport Skort with red piping and logo
- 1 x White sports ankle socks
- Sports shoes (preferably white) – NOT SUPPLIED BY UNIFORM SHOP
- 1 Red bomber zip jacket with logo AND/OR 1 Red polar fleece zip jacket with logo. **Note:** this is the same item included in above section, so no need to order twice!

Bags and Hats

- 2 x School hat – microfibre
- 1 x School chair bag
- 1 x School back pack
- 1 x School excursion bag (optional)
- 1 x School library bag

Note: girls black long or short 'leggings' are not an acceptable sports uniform item.

Boys Starter Pack

This list contains everything you will require to get started at Warrawee, including summer uniform, summer sports uniform and items you will use all year round such as bags and hats. All these items can be found in your Flexischools account – simply click on the "Shop" button on the home page once you have logged in, and select any date for your order – regardless of what day you select, all new student orders will be available for pickup on your second Kindy Orientation Day, Tuesday 28th November 2023.

Please note some items are not supplied by the uniform shop and you will need to supply your own (for example school shoes), and some items are listed twice (such as a polar fleece which is part of main uniform as well as sports uniform). In both these cases, this is clearly indicated in the list below.



Boys' uniform – summer

- 2 x Grey shorts
- 3 x White shirt with logo – short sleeve
- 3 x Short grey socks /red and black stripes
- 1 Red bomber zip jacket with logo AND/OR 1 Red polar fleece zip jacket with logo
- Black school shoes (not joggers) – NOT SUPPLIED BY UNIFORM SHOP

Sports uniform – summer

- 1 x Red polo shirt with logo – short sleeve
- 1 x Black unisex shorts with red piping and logo
- 1 x White sports ankle socks
- Sports shoes (preferably white) – NOT SUPPLIED BY UNIFORM SHOP
- 1 Red bomber zip jacket with logo AND/OR 1 Red polar fleece zip jacket with logo. **Note:** this is the same item included in above section, so no need to order twice!



Bags and Hats

- 2 x School hat - microfibre
- 1 x School back pack
- 1 x School library bag
- 1 x School chair bag
- 1 x School excursion bag (optional)

- Red school hat with logo for boys and girls to be worn everyday at recess and lunch
- Sports clothes and track pants are only to be worn on sports days

Warrawee uniform

Girls Winter Uniform

This list contains everything you will require for your winter uniform, including recommended quantities. As mentioned on the previous page, we recommend you wait until next year to order these, as they are not required until Term 2.



Girls uniform - winter

- 2 x Girls winter tunic
- 3 x Girls plain white shirts – long sleeve (to be worn with winter tunic)
- 3 x Girls red long socks OR 3 x girls red cotton/lycra tights
- Black school shoes (not joggers) – NOT SUPPLIED BY UNIFORM SHOP
- 1 Red bomber zip jacket with logo AND/OR 1 Red polar fleece zip jacket with logo

NOTE: If your child would prefer to wear long pants and shirt instead of a winter tunic, please replace the winter tunic and plain long sleeve white shirts with:

- 2 x Girls grey trousers
- 3 x White shirt with logo – long sleeve



Sports uniform - winter

- 1 x Red polo shirt with logo – long sleeve OR short sleeve
- 1 x Black track pants with red piping and logo
- 1 x White sports ankle socks
- Sports shoes (preferably white) – NOT SUPPLIED BY UNIFORM SHOP
- 1 Red bomber zip jacket with logo AND/OR 1 Red polar fleece zip jacket with logo.

NOTE: this is the same item included in above section, so no need to order twice!

Note: girls black long or short 'leggings' are not an acceptable sports uniform item.

Boys Winter Uniform

This list contains everything you will require for your winter uniform, including recommended quantities. As mentioned on the previous page, we recommend you wait until next year to order these, as they are not required until Term 2.



Boys uniform - winter

- 2 x Grey long trousers or 2 x grey shorts worn with long socks
- 3 x White shirt with school logo – long sleeve
- 3 x long grey socks with red and black stripe
- Black school shoes (not joggers) – NOT SUPPLIED BY UNIFORM SHOP
- 1 Red bomber zip jacket with logo AND/OR 1 Red polar fleece zip jacket with logo

Sports uniform - winter

- 1 x Red polo shirt with logo – long sleeve OR short sleeve
- 1 x Black track pants with red piping and logo
- 1 x White sports ankle socks
- Sports shoes (preferably white) – NOT SUPPLIED BY UNIFORM SHOP
- 1 Red bomber zip jacket with logo AND/OR 1 Red polar fleece zip jacket with logo. **NOTE:** this is the same item included in above section, so no need to order twice!



- Red school hat with logo for boys and girls to be worn everyday at recess and lunch
- Sports clothes and track pants are only to be worn on sports days



CONGRATULATIONS

Warrawee Public School

This certificate verifies that your canteen
is meeting the requirements of
The NSW Healthy School Canteen Strategy

Date issued: 22 November 2019 Valid until: 22 November 2021



Note: This certificate is valid for two years from the date of issue. To re-new your certificate please review your menu against the Food and Drink Criteria of the Strategy and re-submit a Menu

In 2020 the Warrawee Canteen was awarded and certified as having a Healthy Canteen Menu in line with the NSW Healthy School Canteens together with NSW Government Health. We are very proud of this award and continue to maintain this high standard.

Canteen

We are a modern Canteen dedicated to providing a varied selection of fresh, high quality, nutritional food to our students and staff, at very affordable prices. We are open five days per week, with a range of meals and snacks prepared fresh on site daily. Both recess and lunch orders are delivered directly to classrooms.

A Community Enterprise

The Canteen is a not for profit enterprise operated by the P&C. As well as daily operations at the school, the canteen attends all school carnivals where a mobile canteen with specials for the day is provided.

Flexischools ordering system

The canteen uses an online ordering system called Flexischools (www.flexischools.com.au). Flexischools is a convenient way to order for parents, it removes the need to find spare change when placing a lunch order and also ensures that your child's lunch order doesn't get misplaced at the bottom of their bag. Using Flexischools ensures that you are kept up to date with specials and allows you to only order what is available on that day.



Pop-up Canteen at the School Swimming Carnival

Enquiries

The best way to contact the canteen is via email, canteen@wpspandc.org.

If you have a critically urgent enquiry you can ring the school office and ask to be put through to the canteen. We will do our best to answer the phone if we are able, but please understand we are often very busy preparing food and will not always be able to answer. Email communication is strongly preferred, and will usually receive a more timely response.

Thanks and we'll look forward to seeing you during the school year!

WPS Canteen Team
canteen@wpspandc.org



CANTEEN MENU

SUMMER 2023-24

SNACKS

Rice sticks (GF)	\$1.50
Popcorn (GF) (salted/BBQ)	\$2.00
Redrock Deli chips	\$1.50
Grain Wave chips	\$1.50
Apple slinky	\$1.50
Banana bread	\$2.50
Jelly wobble	\$1.50
Cookie (freshly baked by us)	\$1.50

FROZEN SNACKS

Choc dot - frozen chocolate milk	\$0.50
Strawberry kiss - frozen strawberry milk	\$0.50
Crystal - frozen fruit juice	\$0.50
Titanic - two frozen layers of flavoured milk	\$1.50
Willy wonka - two frozen layers of fruit juice	\$1.50
Frozen pineapple ring	\$1.00
Frozen fruit tube (GF)	\$1.00
Icy Pole	\$1.50
Moosie (milk freeze)	\$2.00

DRINKS

Water 355ml	\$1.50
Fruit juice (Just Juice) 200ml (apple/orange/apple & blackcurrant)	\$1.50
Chill J sparkling water (orange passio, groovy grape, watermelon)	\$2.50
Flavoured Milk (Chocolate and strawberry)	\$2.50

SANDWICHES

Freshly made



Vegemite	\$3.00
Cheese	\$3.50
Cheese & tomato	\$4.00
Ham	\$4.50
Ham & cheese	\$4.50
Ham, cheese & tomato	\$5.50
Chicken	\$4.50
Chicken & cheese	\$5.00
Salad	\$5.00
Cheese & salad	\$5.00
Ham, cheese & salad	\$6.00

Lunches and drinks are delivered to classrooms. Frozen items are to be collected from the Infants/Primary canteen windows.



WRAPS



Salad - cheese, cucumber, lettuce, grated carrot, tomato \$5.00

Chicken, mayo & lettuce \$5.50

Chicken & salad - chicken, cheese, cucumber, lettuce, grated carrot, tomato \$5.80

Ham & salad - ham, cheese, cucumber, lettuce, grated carrot, tomato \$5.80

SALADS

Freshly made



Caesar salad \$6.00
Lettuce, cheese, egg, chicken, dressing and croutons



SUSHI

Avocado sushi \$4.00

Chicken & cucumber sushi \$4.00

Cucumber sushi \$4.00

Salmon & avocado sushi \$4.50

Tuna & avocado sushi \$4.00

Tuna & cucumber sushi \$4.00

Vegetable sushi \$4.00

HOT FOOD

Toasted Sandwiches

Made fresh to order



Cheese \$4.00

Ham & cheese \$5.00

Ham, cheese & tomato \$6.00

Cheese & tomato \$4.50

Ham \$5.00

Chicken \$5.00

Pizza

Made fresh to order



Ham & cheese \$5.00

Ham, cheese & pineapple \$5.00

Vegetarian - cheese \$5.00

Vegetarian - cheese & pineapple \$5.00

Garlic bread \$2.20

Chicken wedges \$1.00 each

Hot chicken wrap \$5.00

Made fresh to order

Chicken breast with light bread crumb coating, lettuce and mayo in a warm wrap.

Crumbed chicken burger \$5.00

Made fresh to order

Chicken breast with light bread coating served on a freshly baked bread roll. Choice of lettuce, cheese, mayo

Sausage roll \$4.00

Delicious pastry rolls with meat filling

Whopper burger \$5.00

Made fresh to order

Beef burger patty served on a fresh bread roll with tomato sauce (available with/without cheese, 50c extra)

Lasagne (Gluten free) \$6.00

Note: Some hot food options only available certain days, check Flexischools. Prices and menu items are subject to change.*

TO ORDER: Log onto: www.flexischools.com.au

Warraweekly

The fortnightly school newsletter - the Warraweekly - is the best way to know what's happening.

The P&C section includes the latest P&C news along with updates from the Uniform Shop, the canteen and the band, social and fundraising, traffic, community and grounds sub-committees.

The Warraweekly is available on:

1. The school website:

<http://www.warrawee-p.schools.nsw.edu.au/home>

2. Via the Warrawee School App

See instructions on how to download the Warrawee App (page 22)



Warrawee

PUBLIC SCHOOL

"The place to be educated for the future"

WARRA WEEKLY

Term 3, Week 9: 12th September 2023

CALENDAR FOR TERM 3, 2023

Tue 12/09	P&C General Meeting 7:30pm in the Band Room
Mon 18/09	Honours Assembly @ 9:15am in the School Hall
Thur 21/09	Whole School Dance Concert
Fri 22/09	End of Term 3

Dear Parents and Carers,

Welcome to the final newsletter for the term. There is a lot going on at school at the moment and excitement is rapidly mounting as the end of term draws closer.

TONIGHT'S P&C GENERAL MEETING

At 7:30 this evening the P&C will be holding a meeting in the Band Room. At this meeting there will be a discussion about the possible transfer of the Warrawee OOSH to the Warrawee P&C Association. If you are interested in knowing more about this or contributing to the discussion please come along tonight.

In the last two weeks, Warrawee PS has been a very busy place with lots of great events being hosted and other being finalised for the final two weeks of Term 3.

The Father's Day Breakfast was one of these events. I would like to thank the P&C for organising the breakfast for our Warrawee dads. It was a very special morning and wonderful to see such a large number of fathers there for this special morning with their children. A great deal of time and people power goes into an event such as this and I would like to pass on my thanks to everyone that helped to make the breakfast possible. Your efforts were greatly appreciated.

Last week, the K-2 students participated in the K-2 Athletics Carnival which is always a lot of fun for the children. Again, many of our parents, grandparents and special friends joined the students and teachers for this special morning. SISA provided fabulous equipment for several of the activities and this added great excitement for all involved. Thank you to the staff for planning and running such a special event.

Year 4 students attended camp at Narrabeen for three days last week and had an amazing time. They participated in a range of different activities including canoeing, orienteering and team building initiatives. Sharing this experience with classmates and friends is very special and the students appeared to be enjoying every minute together.

Last week, was also SASS Week and during SASS week we celebrate the vital role played by School Administrative and Support Staff (SASS). We are extremely fortunate at War

CALENDAR FOR TERM 4, 2023

Mon 09/10	All Staff and Students to Start Term 4 Stage 3 Camp (9-11/10/2023)
Tue 14/11	Kindergarten 2024 Transition to School Session 1
Tue 28/11	Kindergarten 2024 Transition to School Session 2
Wed 29/11	Combined Scripture Christmas Services 9:00-9:40am in the Hall
Mon 11/12	Year 6 Farewell
Fri	End of Term 4 for Students

School website

The school website is a great resource. There is an up-to-date calendar of events, school forms and permission notes, newsletters and the Parent Information - P&C section.

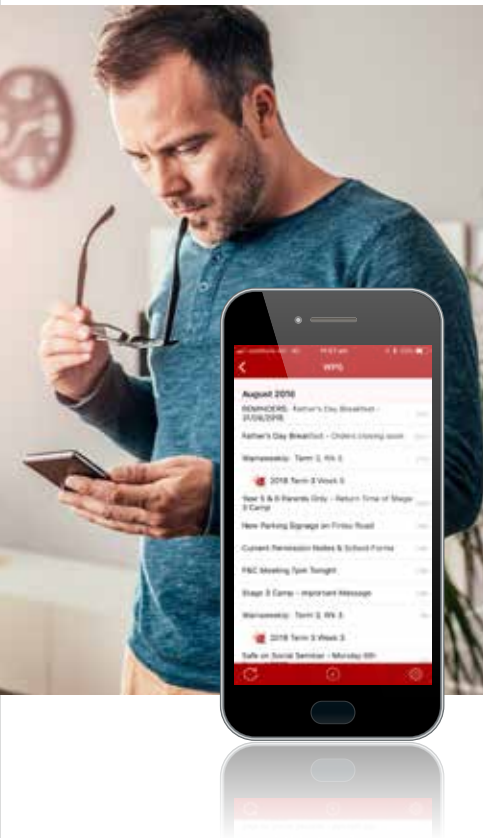
The P&C section highlights upcoming P&C events and provides information about our businesses: the uniform shop and canteen, the band, how to volunteer, our community partners and a lot more.

<https://warrawee-p.schools.nsw.gov.au/for-parents0/welcome>

Warrawee app alerts and notifications

Download the Warrawee Public School App to receive up to date news, newsletters, school alerts and communication straight to your device or email.

The P&C also issues alerts and reminders via the App. See the following page for instructions on how to download the App.



Stay in touch with Warrawee Public School App

news, notes and alerts



Download the Warrawee School App to receive up-to-date news and school alerts and communication straight to your phone OR email - the easiest and fastest way to be informed and **its free!**

1 How to download the App to your device

(phone or tablet)

NOTE: If you want the alert to pop up on your device you need to click on 'Allow Notifications'.

Mac



1. Click on App store icon to open
2. Search for 'Warrawee Public School'
3. **DOWNLOAD**

Android



1. Click on the Play store icon to open
- 2.. Search for 'Warrawee Public School'
3. **DOWNLOAD**

2



and/or
receive updates straight to
your inbox

1. Go to <https://warrawee-p.schools.nsw.gov.au/newsletter.html>
2. Click on the class/classes you would like to receive news and alerts for
3. Enter your name and email address
4. **HIT SUBSCRIBE**

P&C membership

We welcome and encourage our school community to become members of the Warrawee Public School P&C Association.

Joining is easy and can be done by filling out the membership form on the Warrawee Public School website [2023_PandC_Membership_Form.pdf \(nsw.gov.au\)](https://www.nsw.gov.au/2023-PandC-Membership-Form.pdf) or via your Flexischools account.

Membership entitles you to vote on issues at the P&C Meetings and at the election of P&C positions at our AGM. In addition it ensures you are eligible to stand for election to a position on the P&C.

If you would like to know more about being becoming a member, please do not hesitate to contact us by emailing president@wpspandc.org for further information.

P&C meetings

Like to know more about what the P&C does or how to get more involved?

All parents and carers are welcome to come to P&C meetings. They are generally held on the 3rd Tuesday of each term at 7pm at the school. Meeting dates are listed in the Warraweekly and in the online calendar of events.



class parent:
a great way to
get involved!

Be a
class
parent!

It's easy
and FUN!



What's a class parent?

A class parent is the main point of contact between teachers and parents, they help distribute P&C and school information and help maintain/distribute their class list. They also organise class social events, teacher birthday/end of year gift and help coordinate volunteers for their Year Group fundraising/social event.

We look for 1 to 2 parents per class at the beginning of the year to take on this important and fulfilling role.

If this is you, email our class parent coordinator to put your name down for your class!

classparent@wpspandc.org

* We need you!



Remember, a P&C Student details form needs to be completed for all new students to Warrawee in 2024 if you would like to be included on your child's P&C class list. Go to page 25 for QR code link to access and complete the P&C Student details form.

P&C Student Details Form

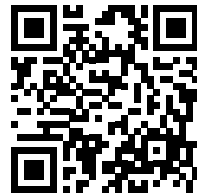
So that you can stay in touch with what is happening in the school and your child's class, you will be invited to complete a student details form online.

The information on the form, enables the class parent coordinator to build a class contact list which is distributed to the class parent and that class only. The list will have your child's name and the names of the other children in their class as well as their Mums/Dads/ Carer's emails and contact numbers. This can be very handy as a parent to help organise birthday parties, communicate with other parents in the class, setup playdates etc.

If you have more than one child at Warrawee Public School, you will need to complete one form for each child. Being on the class list is voluntary.

You can scan the QR code on this page, or use this link [2023 Student Details Form](#) to access the form to complete online.

For more information please contact the Class Parent Coordinator at classparent@wpspandc.org



SCAN ME



P&C grant funds

Have you got a great idea about how we could use some of our P&C funds around our school?

Download an Application for Funding/ Development/ Events from the Warrawee Public School website using this link <https://warrawee-p.schools.nsw.gov.au/for-parentso/welcome/policies-and-forms.html> and send it through. Please email all forms to president@wpspandc.org once you have completed them. We can't wait to receive them!

Events & Community

The P&C schedule a number of events during the year. It's a great way to meet new parents and feel connected to the school community.

We host a range of social events during the year, including the 'Welcome to Warrawee' Event and BBQ to celebrate the beginning of the school year together. Some of our key fundraising events usually include the Cross Country Online Sponsorship, Mother's Day Stall, State and Election BBQ's and Cake Stall, Father's Day Breakfast and the Parents Night In. In 2023 we ran a full events calendar and are excited at similar prospects for 2024.

All parents and carers are welcome to volunteer to help at any event. Calls for helpers will be advertised in the Warraweekly and through class parent emails and represent a wonderful opportunity to meet other parents in the school community.

Why do we fundraise?

Government funding only goes so far. If a school wants more than what the basic template provides, then the money needs to be raised. The P&C's support of many programs at the school is only possible via the generous contributions from the school community. Both the school and your children are grateful for your assistance in bringing them the best educational experience possible!



In recent years, the P&C have used funds raised to make significant improvements to our school for the benefit of the students, including: decodable readers, iPads, smartboards, classroom air conditioning, representative sports uniforms and equipment, outdoor equipment and signage to name a few.

If you have suggestions for fundraising or social and community events you would like to organise, please let us know by attending a P&C meeting or emailing our Events & Community Committee.

Claire D
community@wpspandc.org

Events & Community

One of the primary objectives of any P&C is to bring the community closer together. This includes school staff, students, parents, carers and the broader community in which we live.

School community initiatives

While raising funds for our school is one of the key functions of the P&C, we also like to support community events, such as the National Walk Safely to School Day as well as our own school Working Bees.

The P&C recognises the significant contribution of all staff at the school. Each year we celebrate World Teachers' Day and SASS Recognition week.

Community grants

The P&C keep an eye out for opportunities to apply for community grants and in 2021 used grant funding to refurb the school canteen.

Parent Business Directory

As a community service to the parents of Warrawee Public School, the P&C developed a Parent Business Directory. This directory helps parents find the products and services they may need quickly!

Inclusion in the Warrawee Parent Business Directory publication is open to all Warrawee families who own or part own a business and is completely voluntary for the small fee of \$50 per annum.

Please contact us at community@wpsspandc.org if you would like your business to be included.

It is important to note that when a business partners with the P&C, neither the P&C nor the school are endorsing that business. We are simply noting that if parents are interested in products or services offered by our Community Partners or Parent Directory business, they may wish to give them an opportunity to gain their business.

Community partners

Warrawee Public School P&C has developed an official Community Partnership Program - in line with the Department of Education Sponsorship Unit - to help support our fundraising efforts and social events. Many schools are implementing this model to assist with their fundraising as increasingly limited availability of volunteers can sometimes make fundraising an uphill battle.

The program is a wonderful way to build community spirit, raise funds for our school and is open to any business within our community.

If your business, or others known to you, are interested in supporting the school financially please visit the Warrawee Public School website to review the guidelines and criteria necessary to become a Community Partner.



Band program

Established in 1988, the band has become an integral part of the school and local community, providing opportunities for the students of Warrawee to develop their love of music and their musical skills by learning music in an instrumental ensemble.

The band program is run by the Warrawee Public School P&C. The P&C employs Ben Perche, Hayden Dalton and Tim Ferrier as conductors of our three ensembles, while Ben also acts as manager of the overall music program.

The band program consists of a three tiered concert band program, as well as one extension ensemble for students in Years 5 and 6. Students get to choose a woodwind, brass or percussion instrument in Year 2, and they participate in weekly private tuition on their instrument, as well as twice weekly rehearsals with the whole band. Students move through the three bands in sequence as they develop proficiency on their instruments.

All students start in the Training Band, and move into the Intermediate Band in their second year of playing an instrument. Once they have been learning an instrument for two years, the students join the Performance Band, and can also choose to join the Stage Band (for brass, saxophone and rhythm section instruments)

The bands perform regularly at in school and out of school performances.



Why join the band?

The band provides a friendly, fun and rewarding learning environment for students to develop into great young musicians. The band program is also known for its high teaching standard.

By participating in the band, students develop a level of proficiency in playing a musical instrument, and nurture an increased enjoyment of music. Being part of the program can aid in raising children's confidence and self-esteem through opportunities to perform in public and for their peers. They are also able to work actively as a team member, and build their resilience and diligence through learning their instrument.

How do you join the band?

At the end of Year 2, students are asked to indicate if they are interested in joining the band program for the following year. An information evening is held and an application form completed. The conductors then meet with each student to select the instrument they will play in band. Instruments are chosen based on a number of criteria, including what the student would like to play, what instrument they are likely to achieve success on and the number of each instrument needed for a balanced band. Students in Years 3-6 can also join the band program at any time while at Warrawee Public School. The band conductors will assess their ability and place them in the appropriate band.



Tim Ferrier
Band Conductor
Training Band



Hayden Dalton
Band Conductor
Performance Band
& Stage Band



Ben Perche
Band Conductor Intermediate Band
& Band Program Manager
bandmanager@warraweeband.com

Parking, safety and traffic management

Parking directly outside Warrawee Public School is limited. It can get very busy and we all have a part to play in ensuring safety for all of our school community.

Please be aware of others, obey the road rules and always choose safety over convenience. Please no parking in teachers car parks. Please avoid making u-turns or reversing into driveways to turn around.

There is parking further away from the school on Blytheswood Avenue, Finlay Road, Fox Valley Road and across the other side of the Pacific Highway. Allow yourself time to walk from your car to school. Often parking on one of these streets and walking to school can be quicker than trying to get a parking spot outside of school.

Liaising with government authorities

The P&C has developed a constructive working relationship with Kuring-gai Municipal Council and has significant links with the state government which have delivered a number of traffic, parking and safety benefits around our school. Many significant improvements were achieved in 2018-21 including two 'Kiss and Ride' zones, upgraded school pedestrian crossings, replacement of stairs on Finlay Road, road widening and a Crossing Guard.

Wombat pedestrian crossings

The pedestrian crossings on Finlay and Blytheswood road are "Wombat Crossings". These crossings are much more visual and they significantly reduce the risks to pedestrian casualties. To support the Australian Standard and guidelines set out by the RMS for these crossings, they require increased stopping and no parking distances for improved child safety.

It is very tempting to park or stop and let your children out in these spots as they are very close to the school. Be warned this is unsafe and rangers will book you if you do not comply with the parking signs.

Kiss and Ride

What's a Kiss and Ride?

A Kiss and Ride is designed for quick entry and exit, these zones minimise congestion and risk when used properly by all parents and carers. These zones operate under the same conditions as no parking zones, which means you may stop to drop off or pick up children for a maximum of 2 minutes. You're required to remain in, or within 3 metres of your vehicle.

There are three 'Kiss and Ride' zones at Warrawee Public School.

- 1. Blytheswood Ave - Infants side**
- 2. Blytheswood Ave - Primary Side**

8.30am-9.30am and 2.30pm-4.30pm on school days*

- 3. Finlay Road - Infants side**

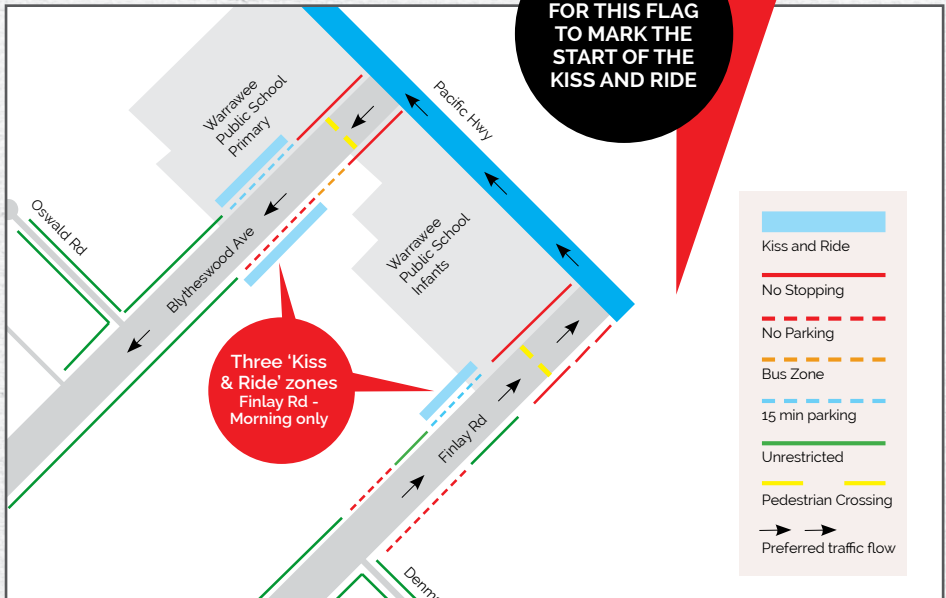
**8.30am-9.30am - Morning only
15mins zone all other times**

Rules/etiquette around Kiss and Ride

- Kiss and Ride times are displayed on the sign. Parking is allowed in these zones outside of these times.
- You have a **maximum of 2 minutes** from the time you stop and must stay **within 3 metres** of your vehicle at all times.
- **Always move to the very start/front spot that is available. The red flag marks the START!** This frees up space behind you - and starts the line (there is not enough room to overtake to get to the spot in front without causing a traffic jam).
- When deciding to leave your car for a second to wave goodbye, please remember where in the queue you might be - there may be cars waiting behind you - and a lot of space in front.
- Please try and wait your turn. If everyone is ready to go and leaves the car swiftly, it won't take long to be in the right zone for drop off.
- Please do not take the opportunity to chat to friends you may see at this time.
- Please ensure your children are ready (with bags) to leave the car, once you have stopped and unbuckled your seatbelt.
- Always ensure your children depart the car closest to the footpath-side door,

**Kiss and Ride
STARTS HERE**
Stop as close as you can to this flag to allow cars to pull up behind you. **2 min drop off zone.**

**LOOK OUT
FOR THIS FLAG
TO MARK THE
START OF THE
KISS AND RIDE**



For any further information please contact
Lucas T by emailing traffic@wpsspandc.org

SAFETY AROUND SCHOOLS

The Facts!

FACT SHEET 1

Parking Safely Around Schools: Parking Signs

Parking signs are planned with children's safety in mind. If you break the rules in a school zone you are not only putting your child at risk but other children too. North Sydney Council patrols school zones to ensure people are driving and parking safely. Please, always choose safety over convenience.



PARKING SIGN

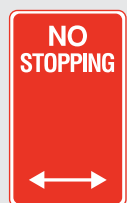
WHAT DOES IT MEAN?

PENALTIES & DEMERIT POINTS



- You can stop in a **NO PARKING** zone (or Kiss and Drop zone) for a maximum of **2 minutes** to drop off and pick up passengers. You must stay within **3 metres** of your vehicle.
- No Parking zones provide a safe place to drop-off and pick-up children quickly. When picking up your children, only pull into the zone when you see your child waiting on the footpath and there is a free space. **Do not queue** – drive around the block if need be.

EXCEEDS:
\$194+
2 DEMERIT POINTS



- You cannot stop in a **NO STOPPING** zone for any reason (including queuing or waiting for a space).
- No Stopping zones keep sight lines clear between drivers and children/pedestrians.

EXCEEDS:
\$349+
2 DEMERIT POINTS



- You cannot stop in a **BUS ZONE** for any reason.
- Bus Zones provide a place for buses to drop-off and pick-up children safely.

EXCEEDS:
\$349+
2 DEMERIT POINTS



- Parking signs with specified time limits allow drivers to park their vehicle for a maximum period of time e.g. 5 minutes, 2 minutes, 1 hour etc.

EXCEEDS:
\$116

If times of operation are shown on parking signs, the restriction applies only at those times e.g. 8am-9.30am and 2.30pm-4pm.

These fines and demerit points apply in school zones and are current as of February 2021.



SAFETY AROUND SCHOOLS

FACT SHEET 2

Parking Safely Around Schools: Parking Rules

Children can be unpredictable, so expect the unexpected, particularly in school zones. Remember, rules and parking signs are in place with children's safety in mind. Please, always choose safety over convenience.



PARKING RULE

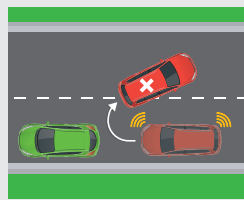
WHAT DOES IT MEAN?

PENALTIES & DEMERIT POINTS



- **DOUBLE PARKING** – You must not stop on the road adjacent to another vehicle at any time, even to drop-off or pick-up children/passengers.
- Double parking blocks visibility and forces other cars to go around you.

EXCEEDS:
\$349+
2 DEMERIT POINTS



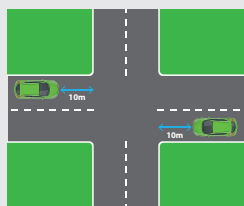
- **U-TURNS** and **3-POINT TURNS** can be dangerous and difficult to manoeuvre and should be avoided, especially in a school zone.

EXCEEDS:
\$349+
3 DEMERIT POINTS



- You must not stop on any **FOOTPATH** or **NATURE STRIP** or on or across a **DRIVEWAY**.
- This forces children/pedestrians onto the road to get around you.

EXCEEDS:
\$349+
2 DEMERIT POINTS



- It is illegal to stop in or within 10m of an **INTERSECTION** with no traffic lights.
- This blocks visibility for turning drivers and children/pedestrians crossing at the intersection.

EXCEEDS:
\$464+
2 DEMERIT POINTS

SAFETY AROUND SCHOOLS

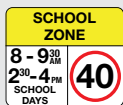
FACT SHEET 3

Driving Safely Around Schools

Keeping our children safe as they get to and from school is everyone's responsibility. Remember, young children can be unpredictable and difficult to see, so slow down and be extra cautious in school zones.



ROAD RULE



WHAT DOES IT MEAN?

- A **40km/h speed limit** applies in school zones to help protect children on their way to and from school.
- The lower speed limit reduces the risk and potential severity of a crash.
- Most school zones operate from 8:00am to 9:30am and from 2:30pm to 4:00pm.

PENALTIES & DEMERIT POINTS

EXCEEDS:
\$489+
2 DEMERIT POINTS



- Slow down to **40km/h** when **bus lights flash**.
- When bus lights flash it means the bus is picking up or dropping off children.

EXCEEDS:
\$365+
1 DEMERIT POINT



- It is illegal to hold and use a **mobile phone** while driving.
- If your phone is secured in a fixed mounting or Bluetooth is enabled, you can still make or receive phone calls, use music or audio functions and use a navigation system.
- Learner and P licence holders are not permitted to use their phone at all.
- Keep in mind that using a mobile phone legally can still be very distracting.

EXCEEDS:
\$464+
5 DEMERIT POINTS



- You must not park on, or too close, to a **pedestrian crossing**. This blocks visibility.
- If the road beyond a pedestrian crossing is blocked, you should not drive onto the crossing.

EXCEEDS:
\$464+
2 DEMERIT POINTS

Catching the bus

Eligible school students receive free or subsidised travel on public transport between home and school. School Opal cards are used in Sydney and surrounding areas, and a school travel pass in regional and rural NSW.

You can apply for school travel passes, School Opal cards and School Term Bus Passes online. Find out more at transportnsw.info/school-students

Students from Kindy-Year 2 are eligible if:

- They are a resident of NSW, or an overseas student eligible for free government education.
- Aged 4 years 6 months, or older.
- No minimum walking distance criteria applies to these students.

Primary school students from Years 3-6 are eligible if:

- They are a resident of NSW, or an overseas student eligible for free government education.
- The straight line distance from their home address to school is more than 1.6 km.
- The walking distance from home to school is 2.3 km or further.
- Primary school students who live too close to the school to be eligible for free travel may qualify for a School Term Bus Pass which provides bus travel at a discounted price for the whole school term.

Grounds force

Working bees

The P & C have a dedicated group of volunteers, who in conjunction with the school and their ground staff, identify key projects to maintain, improve or beautify the school grounds.

The Grounds Force P&C Sub-committee also organise the annual working bee. Past working bees have seen around 200 volunteers - parents, students and staff - come together to undertake a range of jobs around the school. In 2021 due to restrictions, we were limited to a mini Working Bee. Although mini it was mighty in results.

Past projects and working bees, including 2021, we have:

- planted over 150 plants
- cleaned out multiple strip drains around Kindergarten area
- spread soil through garden beds around the school
- spread over 12 cubic metres of mulch to different areas of the school grounds
- removed accumulated leaves, sticks and debris,
- constructed vegetable garden areas,
- assembled a new sports locker
- repainted and re-oiled playground equipment and adventure platforms
- high pressure water cleaning of concrete areas
- cleaned and re-painting in the student bathrooms and canteen
- constructed timber retaining walls
- removed over 14 cubic metres of green waste (mostly leaf debris and weeds) in 2022 alone.

Have an idea or like to get involved:

Please contact **Andy D** by emailing groundsforce@wpsspandc.org

Quick Reference Guide

Warrawee Public School

p: Primary Office (Years 3-6) 9144 2637

p: Infants Office (Years K-2) 9144 5952

e: warrawee-p.school@det.nsw.edu.au

w: warrawee-p.schools.nsw.gov.au

Flexischools

www.flexischools.com.au

President

president@wpspandc.org

Vice President

vicepresident@wpspandc.org

Secretary

secretary@wpspandc.org

Treasurer

treasurer@wpspandc.org

Events & Community

events@wpspandc.org

Grounds Force

groundsforce@wpspandc.org

Class Parent Coordinator Infants

classparentinfants@wpspandc.org

Class Parent Coordinator Primary

classparentprimary@wpspandc.org

Parent Business Directory

businessdirectory@wpspandc.org

Canteen

canteen@wpspandc.org

Uniform Shop

uniformshop@wpspandc.org

Traffic

traffic@wpspandc.org

Band Manager

bandmanager@warraweeband.com

